

Embus is a cost effective and practical floor conversion system that gives installers and operators a guarantee that seat belt anchorages will comply with current and predicted future legislation.<sup>(2)</sup>

Because the system has been fully tested by Rescroft, there is no requirement for installers to carry out their own, independent, testing.

Validated at TÜV in Germany and developed with the full involvement of the UK Vehicle Certification Agency (VCA) and the Dutch Road Council, Embus can be installed and certified throughout much of Europe and beyond.

### Features

- For M1, M2 and M3 category vehicles
- Guarantees that seat belt anchorages comply with EU regulations<sup>(2)</sup>
- Eliminates the need for installers to carry out testing
- For use in Britain and Europe, and anywhere that requires European standards
- Cost effective and maintenance free
- Easy installation
- Supplied with certification



# Embus

## floor fixing system

## Kit

Embus is a complete system comprising seats, lockable quick-release floor fixings, fixed seat retainers, floor rails, installation manual and certification.

## Applications

Designed primarily for those vehicles most frequently converted into minibuses, wheelchair accessible vehicles and PTS ambulances, the system also has applications

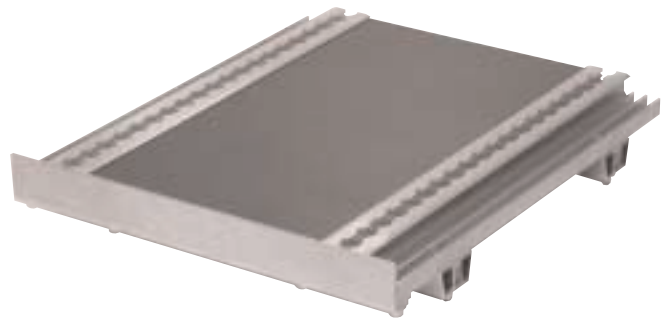
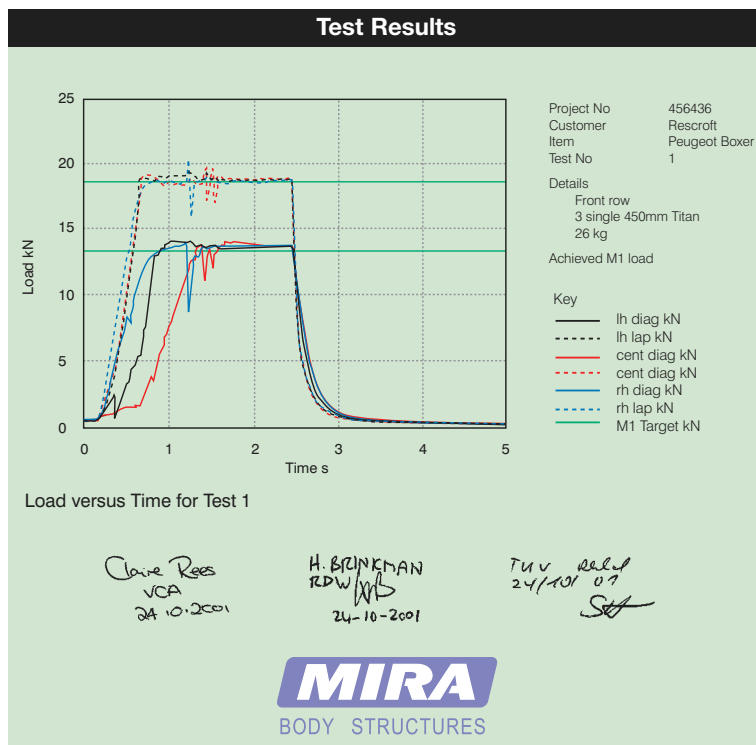
in frontline emergency vehicles with regard to CEN seat fixing regulations.

The Embus system enables fixed, removable and folding seats to be installed in a variety of popular configurations within the vehicle. More vehicles and more seating positions are being added.

Please contact Rescroft for information on specific requirements.

# Embus

## floor fixing system



## Notes

1 Product improvement may affect specifications

2 Compliance can only be guaranteed when the system is installed in strict accordance with the installation manual

# RESCROFT

**VEHICLE SEATING - DESIGN AND MANUFACTURE**

**Rescroft Limited**

20 Oxleasow Road, East Moons Moat,  
REDDITCH, Worcestershire, B98 0RE, UK.

Tel: +44 (0) 1527 521300

Fax: +44 (0) 1527 521301

Email: [enquiries@rescroft.com](mailto:enquiries@rescroft.com)

Website: [www.rescroft.com](http://www.rescroft.com)